

# World War Memorial

## Now Nears Completion

State 11-1-35

State - Oct. 1, 1935

**Only Few Finishing Touches Remain to Be Done—Inscriptions on Exterior and Interior of Building Announced.**

South Carolina's memorial to her World war dead is now practically complete.

Only installation of some electrical fixtures, some painting and polishing and a little work on the ground floor remain to be done before the structure, erected and equipped at a cost of \$105,000 will be ready for dedication.

The imposing edifice, at the corner of Sumter and Pendleton streets, with an exterior of Indiana limestone, stands two stories high, the entrance, facing west, being of Egyptian architecture.

About the top of the building, on the frieze, there is on the Sumter street side, the words "World War Memorial." On the Pendleton street side, reading into the west, and carrying out the idea of "Going West," is the inscription "They were willing to die." On the library side, reading into the east, in hope and the rising sun, is the line "They strove that war might cease" and on the eastern side, reading into the north, the words "For liberty and world peace."

So that in 16 words is told the story of the war:

"They were willing to die,  
They strove that war might cease,  
For Liberty and World peace."

Above the one door of the building, above which are six fluted columns, is a tablet bearing the inscription: Dedicated to the Men and Women of South Carolina Who Offered Their Lives in the Winning of the War.

Opening the great bronze doors, weighing 800 pounds, the visitor finds himself in a vestibule, whose terrazzo floor of pink and gray mottled Tennessee marble reflect the light from the paneled ceiling above. From the vestibule, on either side ascend marble stairways, with heavy bronze railings, leading to the main floor where are the chapel and shrine.

Flanking the entrance to the chapel and the shrine are two tablets of brown marble.

The inscription of the one on the left entrance:

When entering here to bow  
The head before the shrine  
Of those who gave their  
Lives in war, remember they  
Went not forth to Battle  
For the spoils of conqueror,  
Nor did the scourge of Hatred  
Drive them into Conflict.  
Their Cause was the restoration  
Of peace to a strife-torn world,  
They died without malice  
In their hearts.

### FOR THOSE WHO SERVED

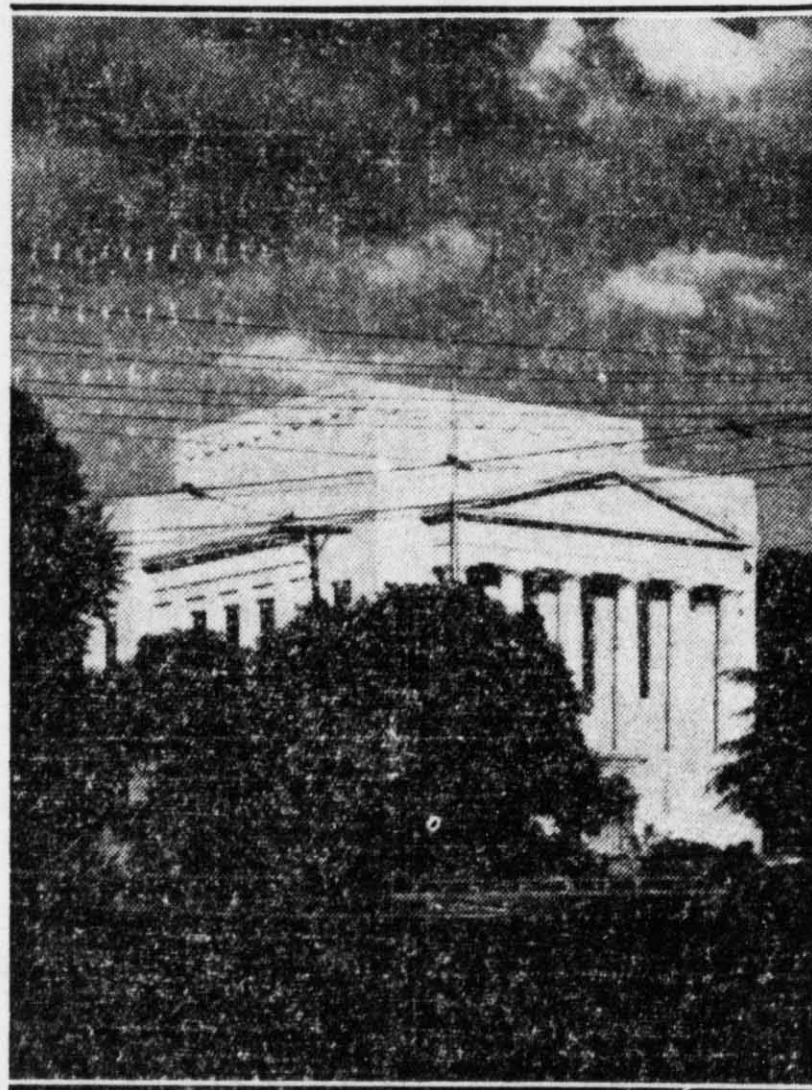


Photo by Mackey.

#### THE WORLD WAR MEMORIAL.

The tablet to the right of the entrance reads:

Wheresoever sleep these  
Loyal Sons of a Proud Mother;  
Wheresoever They Await the  
Glorious reveille, this Chapel  
Is hallowed as Their Tomb.  
And let those who come  
Within these sacred precincts  
Ever Keep in Mind the Purity of  
The Purpose of the Remembered  
Dead, And Renew Allegiance to  
That Peace With Honor  
For Which They Fought.

Over the door is a wreath of laurel leaves worked in marble.

Four marble pilasters, with white Corinthian capitals, adorn the vestibule on the main floor, which is lighted by five windows, three to the front and one over each of the two stairways. The high ceilings in panels, centers being light blue.

The memorial chapel impresses with

its quiet and simple dignity. About the walls is a pilastrade of 24 pilasters, each terminating in modern Greek capitals. On each side of the chapel are three deep alcoves, with sides of fluted marble, and outside windows. The high ceiling, with panels in bright colors, lends a quiet beauty to the interior.

At the eastern end of the chapel, facing the door, is the shrine, with walls to the north, east and south, of pink marble surmounted by an ornamental frieze.

On a panel in the eastern wall of the shrine is the dedication to the dead. It reads:

SOLDIERS  
OF

SOUTH CAROLINA

THIS IS YOUR PEOPLE'S TRIBUTE TO THE SPIRIT THAT MADE YOU PATRIOTS; TO THE NOBILITY OF YOUR PURPOSE IN ESPOUSING THE CAUSE OF THOSE BEYOND WIDE WATERS BATTLING AGAINST SUBJUGATION BY POWERFUL INVADING FOES. TO YOUR ENDURANCE OF THE TRIALS OF WAR; TO YOUR VALOR ON LAND AND SEA TO YOUR ABHORRENCE OF THE GREED OF CONQUEST TO YOUR LOVE OF JUSTICE TO YOUR DEVOTION TO PEACE TO YOUR SACRIFICE.  
GOD REST YOUR SOULS AND MAY HE HELP THE LIVING TO BE WORTHY TO REAP IN THE FIELD OF HONOR

WHERE YOU HAVE SOWN.

The inscriptions, printed here for the first time, are by a committee consisting of Capt. William E. Gonzales, chairman; Dr. Reed Smith, A. S. Salley, Jr., McDavid Horton and S. L. Latimer, Jr.

Immediately in front of the dedication tablet is a marble stand, four feet high and on its front is inscribed the face of the seal of South Carolina.

The shrine and indeed the entire building is illuminated by indirect lighting; over the shrine also is a skylight.

On each side of the shrine are roomy offices, connecting with lavatories.

In the ground floor or basement will be the home of the historical commission of South Carolina. In it will be housed all of the state's public records, not in current use, that have accumulated in the 265 years of the state's history.

To the rear of the main room of the ground floor are three large offices, well lighted and ventilated.

The entire building, which is fireproof throughout, will be heated by the plant at the university.